



Grange Park 2025 Travel Newsletter



How's it going?

On behalf of Bovis Homes, Smarter Travel Ltd would like to thank the residents of Grange Park for their continued engagement during the Travel Plan period, including participation in the annual Travel Surveys to understand how travel behaviour changes over time, and how we might be able to help you travel more sustainably.

We're pleased to share that the Grange Park Travel Plan targets are on track to be achieved, thanks to your sustainable travel choices!

Visit smartertravel.uk.com/grange-park-thurston to find travel information for your local area, view the latest Travel Plan update and, if you haven't done so already, claim your welcome voucher (see page 5 for details).

We hope you find this newsletter useful. If you have any travel related queries, please do get in touch, our contact details are on page 6.

**Your Travel Plan Coordinator,
Smarter Travel Ltd**



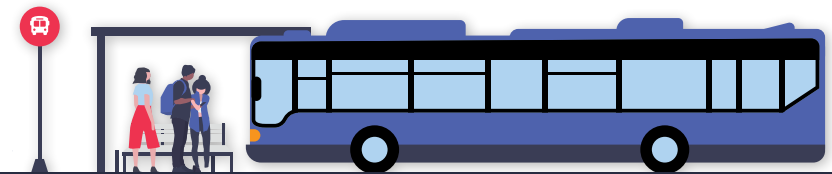
Public Transport

Your nearest bus stop is **Mill Lane** on Barton Road a 3-minute walk from home, for services towards Thurston, Great Barton and Bury St Edmunds. The new M40 Mulleys service also stops Mill Lane and runs every 1-2 hours Thurston and Bury St Edmunds. Check timetables online at suffolkonboard.com

The nearest train station is Thurston, a 16-minute walk or a 5-minute cycle. Turn the page to view the Thurston Rail User Guide, designed to help people use the level crossing safely.

Connecting Communities Mid Suffolk offers a door-to-door transport service for those unable to use public transport due to age, disability, limited mobility or lack of public transport options. Call **01449 614 271** to check your eligibility from Monday-Friday between 9am-4pm. The service runs 7am-7pm, Monday-Saturday.

Do you have some time to volunteer with **Connecting Communities Mid Suffolk**? Find out more on their website at: communities.suffolkonboard.com



Active Travel

Where's your sense of adventure?

Find it with **Strava.com** by following family, friends, even athletes' adventures, log over 30 activities on the app, such as walking and cycling, and have fun with new challenges.

Suffolk Road Safe Team offer free 3-hour cycle training sessions for families, they come to you! Find out more at suffolkroadsafe.com/family-cycling-sessions

Your local cycle repair shop is **Halfords**, they can help you with a range of bike servicing. You can find them at Sicklesmere Road, Bury St Edmunds, IP33 2BN.

Explore with the **Bury St Edmunds Ramblers** group and find local walking routes and group walking events in and around Thurston.

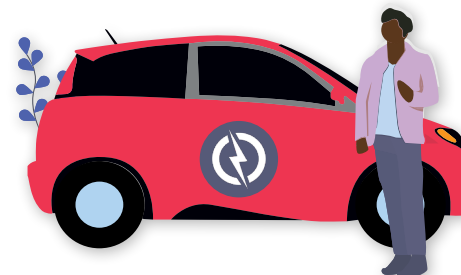
Spot any issues in the roads, footpaths or cycleways? Report it to suffolk.gov.uk/report-a-highways-issue



Car Share/Go Electric

Sharing a journey with 1 other person could cut your costs and carbon by 50%, not to mention it saves the average person £1,000 per year! Scan the QR code or visit **Liftshare.com** to start car sharing with Liftshare, it's free and flexible, only share when it suits you.

Go electric! As of July 2025, there were over 84,000 charging points in the UK and growing fast. Find chargers and plan routes at **Zap-map.com**.



Thinking about charging your vehicle at home? Find out how you could do so by visiting the Octopus EV website: octopusev.com/charging/home-charging

Thurston Rail User Guide

You have moved to an area with a level crossing.

Trains travel through Thurston Station at up to 75 miles per hour. Some trains travel through the station without stopping. When you use the crossing, please;

- take your time
- only cross when you see the green light on the crossing
- only cross when you are sure no trains are coming.

Thurston Station level crossing does not have gates or barriers. This crossing provides access to the westbound (towards Bury St Edmunds) station platform. The crossing is protected with miniature stop lights and an audible warning which is triggered by an approaching train.

How to cross Thurston level crossing safely.

Stop, Look, Listen



When you approach Thurston level crossing, you must;

- stop, look and listen
- take time to read the signs and follow the instructions
- remove your headphones and put your phone away

Warning Lights



Thurston level crossing has red and green lights to help you know when it is safe to cross. Sometimes, more than one train will be passing. The red light means a train is approaching and it is not safe to cross. The green light on the crossing means it is safe to cross.

To cross safely, you must:

- stop and wait behind the line when the red light is showing
- only cross when the light turns green
- do not stop on the crossing



Warning Alarms



Thurston level crossing has an audible alarm when a train is approaching. When you hear the alarm, you must stop behind the line and if the alarm continues after a train has passed, you must wait.

If there's a safety threat to you or others, such as a damage or a fault at the level crossing, report it to Network Rail by calling the 24 hour emergency helpline on 03457 114141, or write to them at:

Network Rail,
Waterloo General Office,
London,
SE1 8SW.



In the event of emergencies, call 999.

Plan Your Journey

Travel Voucher

If you haven't already claimed, the first occupier of each household within of Grange Park is eligible to claim **one** of the following welcome travel incentives:

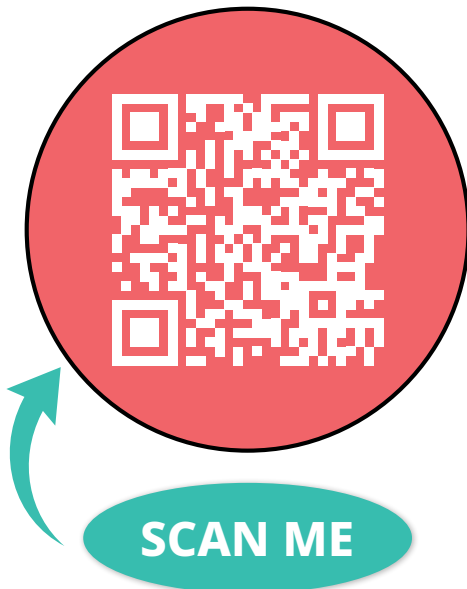
- £150 active travel voucher for Decathlon, or;
- 2-month bus pass for local services, or;
- 2-month train pass for services to Bury St Edmunds / Stowmarket

Limited to one claim per household, first occupiers only. Visit our website for full Terms and Conditions: smartertravel.uk.com/contact-us/terms-conditions-2/

Personal Travel Plans (PTPs)

Each member of your household can also claim a free **Personal Travel Plan** (PTP) to help explore your sustainable travel options. The PTP offers information on viable travel modes for your journey including walking, cycling, public transport and car sharing, where appropriate.

Scan the QR code below or visit smartertravel.uk.com/grange-park-thurston to learn more information.



As your dedicated Travel Plan Coordinator, we are here to help you with your travel queries, there are various ways you get in touch:

Contact Your Travel Plan Coordinator



01206 228800



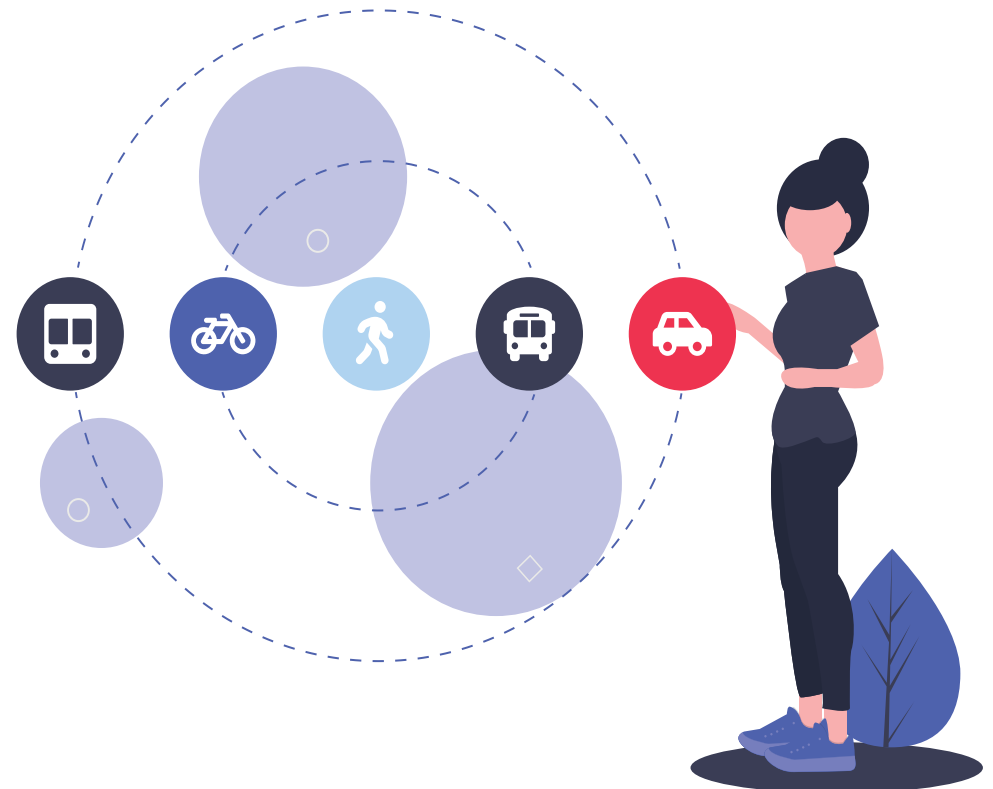
GrangePark@smartertravel.uk.com



smartertravel.uk.com/grange-park-thurston



Facebook.com/SmarterTravelSuffolk



This newsletter is brought to you by



On behalf of

