



Woodland Heath 2025 Travel Newsletter



How's it going?

On behalf of David Wilson Homes and Barratt Homes, Smarter Travel would like to thank the residents of Woodland Heath for their continued engagement during the Travel Plan period, including participation in the annual Travel Surveys to understand how travel behaviour changes over time, and how we might be able to help you travel more sustainably in future.

Keep an eye out for the 2026 Travel Survey data to have your say about travel in your local area, raise concerns, ask questions and win prizes!

Visit smartertravel.uk.com/woodlandheath to find travel information for your local area, view the latest Travel Plan update and, if you haven't done so already, claim your welcome voucher (see page 6 for details).

We hope you find this newsletter useful. If you have any travel related queries, please do get in touch, our contact details are on page 7.

**Your Travel Plan Coordinator,
Smarter Travel Ltd**



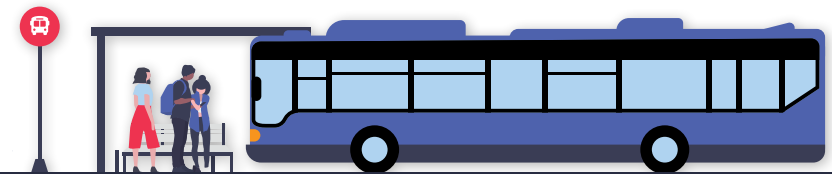
Public Transport

Your nearest bus stop is **Woodland Heath** on Salhouse Road, approximately a 3-minute walk from home, for services towards Norwich and Rackheath using the Konectbus City 5 service. Check timetables online at konectbus.co.uk.

The nearest train station is **Norwich**, a 18-minute cycle or 22-minute bus journey. You can use the train station for services to Ipswich, Colchester, London, Stansted Airport, Cambridge, Liverpool and beyond.

Norwich Door to Door offers a transport service for those unable to use public transport due to age, disability, limited mobility or lack of public transport options. Call **01603 776 735** to check your eligibility from Monday-Friday between 9am-4:30pm. The service runs 9am-4:30pm, Monday-Saturday.

Do you have some time to volunteer with **Norwich Door to Door**? Find out more on their website at: norwichdoortodoor.org.uk



Active Travel

Where's your sense of adventure?

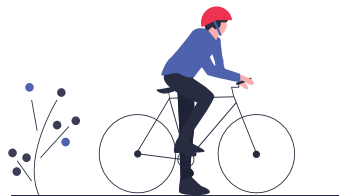
Find it with **Strava.com** by following family, friends, even athletes' adventures, log over 30 activities on the app, such as walking and cycling, and have fun with new challenges.

The footway/cycleway leading from Woodland Heath now takes you directly into Norwich City Centre via Salhouse Road.

Your local cycle repair service is **Moore and Son Cycles**, they can help you with a range of bike servicing and they come to you. Give them a call on **07508 016758**.

Explore with the **Norwich Ramblers** group and find local walking routes and group walking events in and around Norwich.

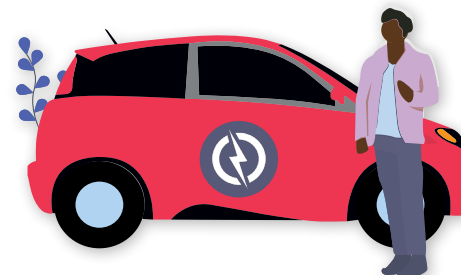
Spot any issues in the roads, footpaths or cycleways? Report it to norfolk.gov.uk/article/39652/Report-a-highways-problem



Car Share/Go Electric

Sharing a journey with 1 other person could cut your costs and carbon by 50%, not to mention it saves the average person £1,000 per year! Scan the QR code or visit **Liftshare.com** to start car sharing with Liftshare, it's free and flexible, only share when it suits you.

Go electric! As of October 2025, there were over 86,000 charging points in the UK and growing fast. Find chargers and plan routes at **Zap-map.com**.



Thinking about charging your vehicle at home? Find out how you could do so by visiting the Octopus EV website: octopusEV.com/charging/home-charging

Travel Plan Perks

Travel Voucher

The first occupier of each household within Woodland Heath is eligible to claim **one** of the following welcome travel incentives:

- £70 active travel voucher for Decathlon, or;
- 4-week bus pass for local services.

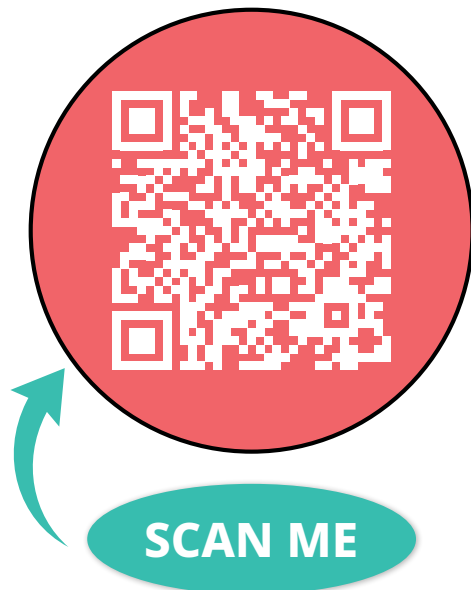
Limited to one claim per household, first occupiers only. Visit our website for full Terms and Conditions: smartertravel.uk.com/contact-us/terms-conditions-2/

Only 13% of households have made a claim, so you could be missing out!

Personal Travel Plans (PTPs)

Each member of your household can also claim a **free PTP** to help explore your sustainable travel options. The PTP offers information on viable travel modes for your journey including walking, cycling, public transport and car sharing, where appropriate.

Scan the QR code below or visit our website to find out more:
smartertravel.uk.com/woodland-heath



As your dedicated Travel Plan Coordinator, we are here to help you with your travel queries, there are various ways you get in touch:

Contact Your Travel Plan Coordinator



01206 228800



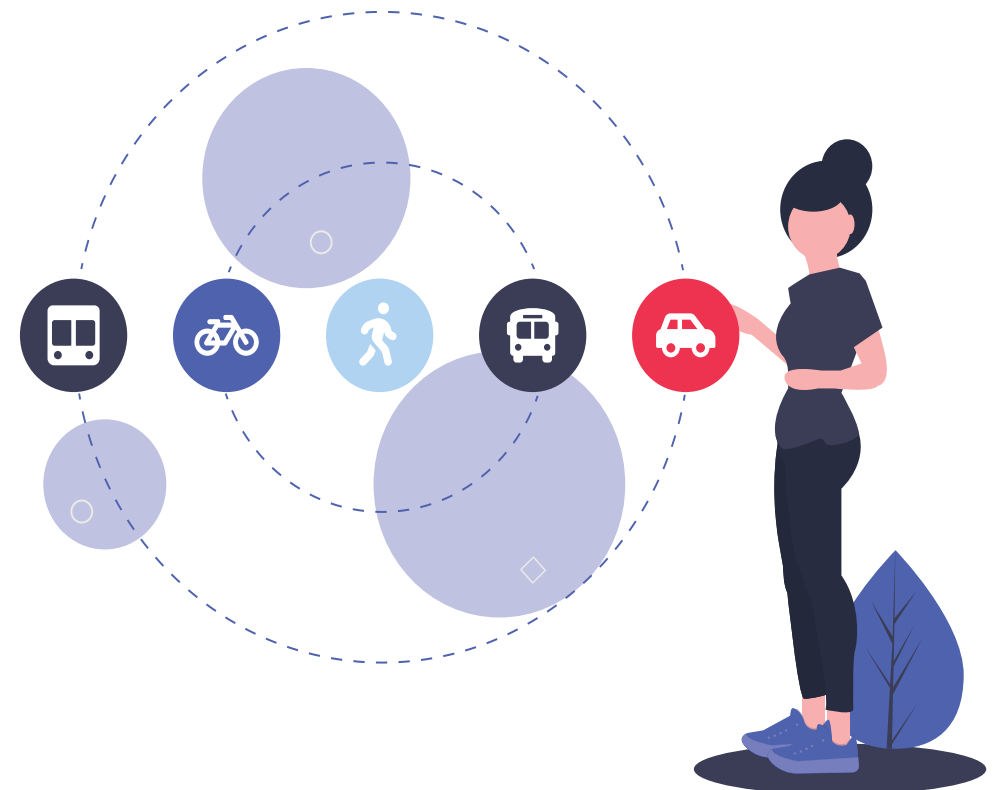
WoodlandHeath@smartertravel.uk.com



smartertravel.uk.com/woodland-heath



Facebook.com/SmarterTravelNorfolk



This newsletter is brought to you by



On behalf of



DAVID WILSON HOMES
WHERE QUALITY LIVES

