

Riverside Grange  
NORTH FAMBRIDGE

# SMARTER TRAVEL PACK

YOUR LOCAL TRAVEL INFORMATION

CLAIM  
YOUR  
TRAVEL  
TICKETS  
INSIDE!



# CONTENTS

Claim your travel tickets.....03	Public transport.....10
Cycling around North Fambridge .....04	Riverside Grange website .....12
Walking around North Fambridge ..... 06	Greener travel choices.....13
Riverside Grange & the local area map .....08	Discounted travel.....14

Dear Resident,

Congratulations on moving to your new home and welcome to Riverside Grange, North Fambridge.

It is important to David Wilson Homes that you settle in well to North Fambridge and the local area, to help make your move a little bit easier we have produced this Travel Information Pack.

Throughout this pack, you'll find information on the variety of local travel options available to and from Riverside Grange, including information on public transport services as well as walking and cycling routes.

We will also be hosting small events and keeping you updated through annual newsletters - keep your eyes peeled for competitions. As part of our role, we will monitor the traffic annually through surveys and onsite visits to help find improvements for you.

As a resident of Riverside Grange you are entitled to a 1-week train ticket to Wickford or Southminster. Additionally we would like to invite you to receive a free Personal Travel Plan - highlighting all the different travel options available to you for your regular journeys.

We really do hope that you find this information useful and enjoy exploring North Fambridge and the surrounding areas using the variety of travel options available to you.

On behalf of David Wilson Homes, thank you for selecting Riverside Grange as the place you will call home.

Kind regards,  
Louisa

Your Travel Plan Coordinator,  
Smarter Travel Limited



# CLAIM YOUR VOUCHER

As part of David Wilson Homes commitment to you, you can claim one of the following vouchers:

- A 1 week train ticket from North Fambridge to either, Wickford or Southminster.

and

- A free Personal Travel Plan, detailing all your travel options for your chosen destination.



## HOW DO I CLAIM MY TRAVEL TICKET OR VOUCHER?

To claim your ticket or voucher head to:  
**SmarterTravel.uk.com/RiversideGrange**  
and fill out your details.



OR SCAN THE QR  
CODE HERE

If you do not have access to the internet then please email, call or even write to us, just be sure to include your full name, address and email address (if you have one). We would love to hear from you!



## REGISTER YOUR BIKE FOR FREE!

By registering your bike you are adding the possibility of your bike being returned in the event of it being stolen. To register your bike head to:  
**SmarterTravel.uk.com/RiversideGrange**.

## RECEIVE A FREE PERSONAL TRAVEL PLAN

Alongside your voucher you can also claim a free Personal Travel Plan, detailing all your available modes of transport to and from your most travelled destinations. This can be anything from your commute into work or your weekly shopping trip, we will explore your best options.

What's great about the travel plan is it will show you a cost/time comparison, CO<sub>2</sub> emissions saved along with calories burned!

How do I claim my travel plan? The same way you claim your voucher, simply head to **SmarterTravel.uk.com/RiversideGrange**.

# CYCLING AROUND NORTH FAMBRIDGE

From Riverside Grange you can reach the North Fambridge train station in 2-minutes via bicycle. The station is located along Fambridge Road which is a cycle friendly 30mph paved road. You can also reach South Woodham Ferrers with more amenities, including; an Asda superstore, Sainsburys and South Woodham Ferrers station which is only a 23-minute cycle ride, however the route involves a national speed limit road for the majority of the journey. Head over to [SmarterTravel.uk.com/RiversideGrange](https://www.SmarterTravel.uk.com/) for more information on local cycle routes and cycle stores. Keep a look out for our annual cycle surgery vouchers we will be offering by following us on Facebook [@SmarterTravelEssex!](https://www.facebook.com/SmarterTravelEssex/)

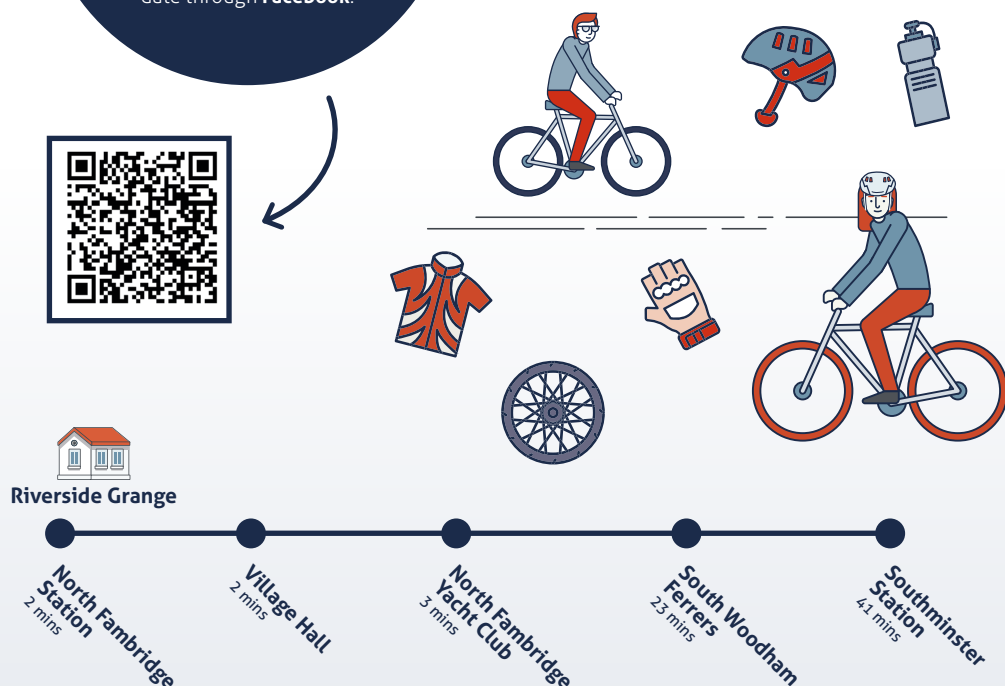
## DID YOU KNOW YOU CAN GET A FREE BIKE HEALTH CHECK?

Head over to the **Halfords** website to find your nearest participating store or scan here. We will also be holding some cycle repair events - keep up to date through **Facebook**.



## HAVE YOU HEARD OF CYCLE TO WORK SCHEMES?

Cycle to work schemes are Government tax exemption initiatives designed to help you save money on a bike and accessories. The cost of this is then spread across your salary saving between 25% and 39%. Ask your employer if you can take part!



Many of us are now already commuting far less, but not only is cycling great for commuting but even better for maintaining a healthy lifestyle. There are many scenic cycle routes about which can be a great activity for all levels, including the whole family - we've put together our top two mobile apps to get you moving and exploring new cycle routes.

## CYCLE STREETS

This website and mobile app is the go-to place for planning a cycle route. You can even select your cycle speed or if you would like a quieter route.



## STRAVA

Keep track of your cycle journeys and share with friends and family! Available free on iOS and Android devices. Join the Smarter Travel Strava group, along with other residential developments across the East of England, scan the QR code below!



## BIKE CLUB

Bike Club – is a great alternative, allowing you to lease a children's bike and upgrade when they grow, find out more: [thebikeclub.co.uk](https://thebikeclub.co.uk).



For information on cycle training and cycle servicing near you visit the Safer Essex Roads website at: [SaferEssexRoads.org](https://SaferEssexRoads.org) or follow them on Twitter [@SERPCycling](https://twitter.com/SERPcycling).

(Cycle training isn't just for kids but also great for adults to improve confidence and gain cycle skills among traffic!)

## E-BIKES

E-bikes have become the next best thing in terms of transport, offering you that extra assistance to allow you to travel further as effortlessly as you like. They are a great cost saving method for those awkward length journeys with the average full charge costing you only 17p! To find out more even trial an E-bike for free head to the Halford website: [Halfords.com](https://Halfords.com).



# WALKING AROUND NORTH FAMBRIDGE

Walking is a great way to get around and the best thing is that it is free! It's also an easy way to get fitness into your daily routine. Although there are not many facilities within walking reach of Riverside Grange, there are plenty of beautiful leisure walks to explore. Please refer to the local map on pages 8/9.

## HAVE YOU CONSIDERED JOINING A LOCAL WALKING GROUP?

The North Fambridge Ramblers is an established local walking group! Visit: [Ramblers.org.uk](https://ramblers.org.uk) and search for North Fambridge or scan the QR code to find out more.



## THERE ARE SO MANY BENEFITS OF WALKING

Many of us have recently included a walk into our daily routine for our mental and physical health and can all recognise how great the benefits really are including:

- Maintaining body weight and lower the risk of obesity.
- Improvements to your mood and wellbeing.
- Encouraging productivity and improving creativity!



Riverside Grange



## USEFUL APPS AND WEBSITES

**Map My Walk:** Record your walks details, including duration, distance, pace, speed, elevation, calories burned and the route travelled.

**Go Jauntly:** Full of local mapped out walks for you to try.

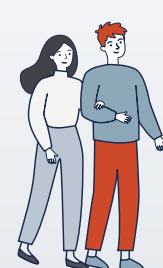


## TIPS TO INCLUDE A WALK WITHIN YOUR BUSY LIFESTYLE:

- Use your lunch break wisely, take yourself for a walk – it is a break after all!
- Walk to your daily errands if possible, i.e to the Post Office & shops.
- Include a walk within your social life, this can be catching up with a friend over a stroll, or even over the phone.
- Find a great podcast to enjoy, reward yourself on your walk by listening to this – time will fly by and it won't even feel like exercise!
- Lastly, use it within your commute, your commute may be too far to walk but have you tried parking further away or getting off the bus a stop or two early to finish your commute by foot?



Claim your hi-visibility kit, including key rings and stickers! Head to [SmarterTravel.uk.com/RiversideGrange](https://SmarterTravel.uk.com/RiversideGrange) or scan the QR code!



**DID YOU KNOW 30 MINUTES OF FRESH AIR CAN IMPROVE YOUR PRODUCTIVITY BY 40%?**

## PLACES TO VISIT:

### Blue House Farm Nature Reserve

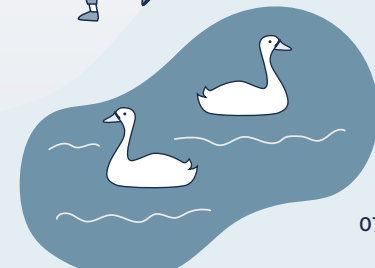
Only a 7-minute walk away from Riverside Grange you can reach the Blue House Farm Nature reserve, with a 4 km circular walking route passing around the farm and the seawall footpath, giving access to the three bird hides along the way with plenty more wilderness to spot.

Open all year round, this nature reserve is a wonderful place for a leisure walk. For more information go to: [Essexwt.org.uk/nature-reserves/blue-house-farm](https://Essexwt.org.uk/nature-reserves/blue-house-farm).

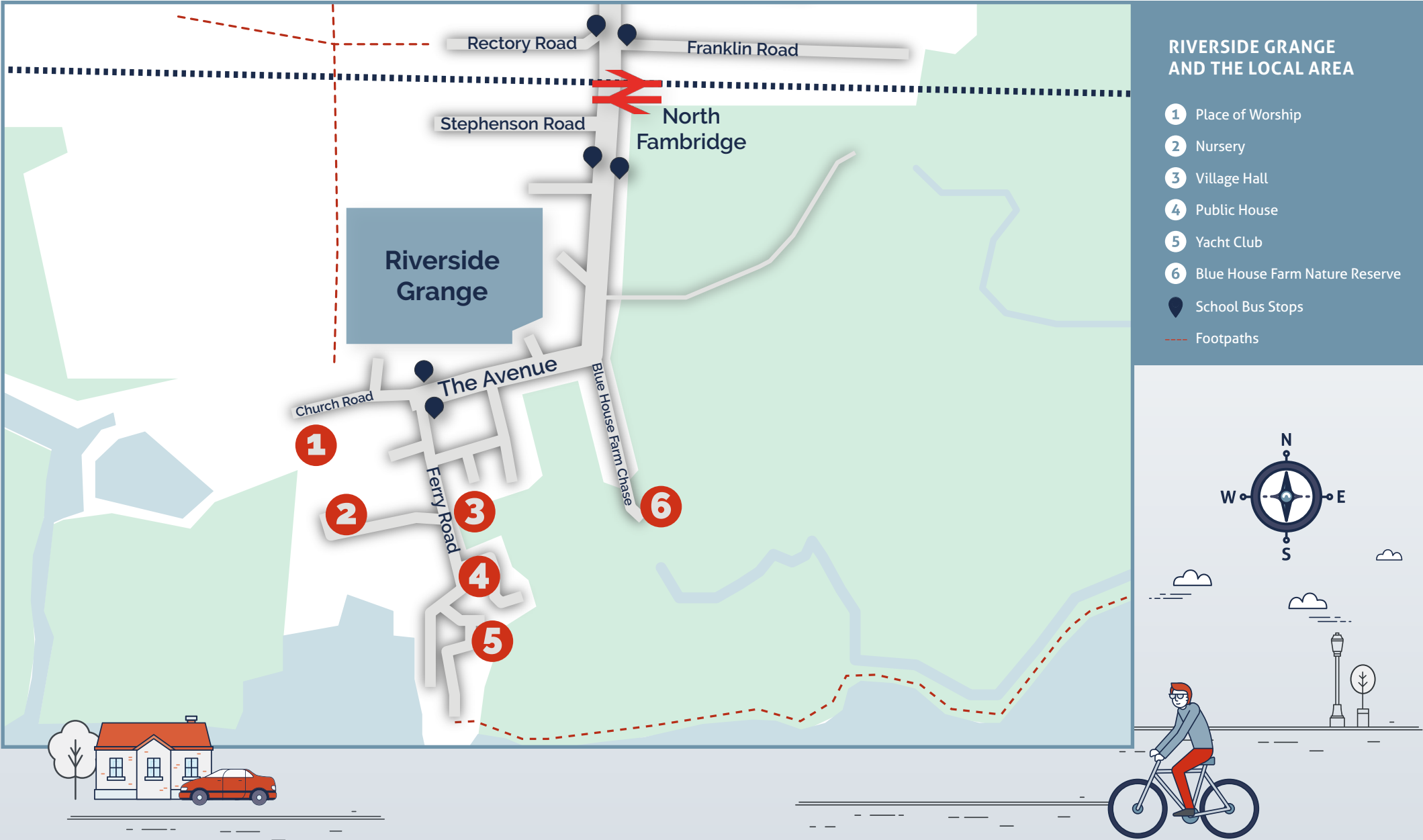
### Salt Marsh Coast Trail

The Salt Marsh Coast Trail is right on your doorstep! Along the picturesque coastline of the Maldon District, five Saltmarsh Coast Hubs have been installed. Providing the opportunity to learn interesting facts about this fascinating part of the Essex Coast.

Head to: [VisitMaldonDistrict.co.uk/Discover/Saltmarsh-Coast](https://VisitMaldonDistrict.co.uk/Discover/Saltmarsh-Coast).



# THE LOCAL AREA



# BUS TRAVEL TO AND FROM RIVERSIDE GRANGE

The closest bus stop to Riverside Grange is Ferry Corner, located along the Avenue Road, approximately a 4-minute walk to the stop. From this stop operates Fords of Althorne buses with the FC03 service to South Woodham Ferrers running once a day alongside school hours, Monday to Friday. This is the only operator and service within walking distance of Riverside Grange.

There is also the DaRT Service bus which is a completely flexible bus schedule which can divert on and off route to collect and drop off passengers within the operating area - you can even be picked up directly from your door. It works with group bookings to provide sufficient volume of passengers with similar itineraries.

VIEW THE BUS  
TIMETABLE BY  
SCANNING HERE:



FIND OUT MORE  
ABOUT THE DART  
SERVICE BUS,  
SCAN HERE:



## HOW DO I BOOK ONTO THE DART SERVICE?

Their service operates Monday-Saturday, to book a journey you can either call: **01621 874410** or email: **Bookings@EssexandSuffolkDart.co.uk**, you will need to book at least two hours in advance of travel.

The fare price is charged by how many miles you are traveling, to find out more information please head to: **EssexHighways.org/Getting-Around/Bus/Community-Transport/Demand-Responsive-Transport-Dart** or scan the QR code to the left!

Essex  
Highways

HEAD TO  
**SmarterTravel.uk.com/**  
**RiversideGrange** for  
more info on buses &  
a guide to reading bus  
timetables.



## USEFUL APPS AND WEBSITES

Visit the Essex Highways website for all travel advice with a wealth of links.  
**Essex.Gov.uk/TravelSmart**

**Bus Checker:** Instant up to date info on all buss throughout the U.K to help you plan your journey.

Essex County  
Council



Bus  
Checker



# TRAIN TRAVEL TO AND FROM RIVERSIDE GRANGE

Riverside Grange is very well connected with multiple train stations within reach, all with short connections to London.

Your closest train station is North Fambridge which is only a 9-minute walk or a 2-minute cycle ride. From here there is a regular direct service to Wickford, from Wickford you can reach connecting services to **London Liverpool St**. Alternatively, there is a regular and direct service to Southminster which then has a connecting service to Southend Victoria.

You will find 4 bicycle storage spaces and 138 car parking spaces with 16 cycle storage spaces. Bikes can also be taken on trains!

For more information on taking bicycles on trains, please visit the PlusBike section of the National Rail website: **nationalrail.co.uk**.

## SAVE MONEY ON TRAIN TRAVEL!

Railcards are a great way to easily save money on the cost of train travel (up to 1/3rd off) visit the **Railcard.co.uk** website to find out more and how to apply.

SCAN TO FIND  
OUT IF YOU'RE  
ELIGIBLE FOR A  
RAILCARD!



You can claim FREE rail travel to Wickford or Southminster! Head to: **SmarterTravel.uk.com/RiversideGrange** to redeem.



## DOWNLOAD THE NATIONAL RAIL APP

The National Rail app allows you to plan journeys via train travel as well and receiving alerts and notifications in the event of any disruption or delays, tickets can also be purchased through their app & website.

## FOLLOW GREATER ANGLIA ON TWITTER

Follow Greater Anglia on Twitter for on time updates and journey delays **@GreaterAnglia**.

National  
Rail



Greater  
Anglia





# HAVE YOU VISITED THE SMARTER TRAVEL WEBSITE YET?

Keep up to date with what's  
happening in and around Riverside Grange  
**SmarterTravel.uk.com/RiversideGrange.**

Make sure you save the website as one  
of your favourites as we will be regularly  
updating with new information and  
resources specifically for you.



@SmarterTravelEssex



@RJSmarterTravel

## GREENER TRAVEL CHOICES

Public transport, cycling or walking to your commute is not possible for everyone, however there are still plenty of ways you turn your car travel green or just reducing the number of car journeys you make.

### CAR SHARING

Car sharing can be a great way to reduce your cost of travel along with CO<sub>2</sub> emissions, whether that be someone you may already know or through the **EssexCarShare.com** website.



### DID YOU KNOW?

- Each week, the average Brit spends seven hours in their car.
- The average annual cost of car insurance is £436.
- Drivers spend on average £89.67 per month on fuel.

### JOURNEY SWAPS

Many of us are already using the car a lot less which is great, however there are ways to reduce this even further by; shopping locally – why not try to swap one car journey to the village shops for a walking or cycling journey?

Home deliveries - with so many to choose from now, you can even get fresh vegetables and milk delivered from local farm shops such as: Milk and More, Fruit N Veg Delivery or Oddbox (if you don't mind your vegetables in wonderful shapes).

### WORKING FROM HOME?

Many of us have been WFH a lot more, with office working slowly returning back to normal. Have you considered switching to WFH a couple days a week? This way you get the best of both worlds and even better, can reduce your travel costs and your carbon footprint. Find useful links, tips and resources for working from home at **SmarterTravel.uk.com/RiversideGrange.**

### THE FUTURE IS ELECTRIC!

By 2030 all cars produced will have to be electric or hybrid. Have you considered switching your car to go green? There are so many benefits to making the switch including:

- Cheaper running costs
- Saving the planet
- Free or heavily reduced road tax
- Reliability

Bury St Edmunds is filled with charging points, use the handy Zap Map website **zapmap.co.uk**.

Did you know you can get up to £350 to contribute towards a home charger with the OLEV grant? find out more at: **Goultralow.com**.



SCAN THE  
QR CODE TO USE  
OUR DISCOUNT  
TOWARDS A  
HELLO FRESH BOX

BUS PASSES

If you haven't already, visit the Essex County Council website to see if you are eligible for a discounted bus pass, this includes transport for school, those of pensionable age or disabilities. Additionally, if you can't access the internet, please contact us and we will do our best to help!



SCAN THE QR CODE HERE

RAIL CARD OPTIONS FOR 1/3RD OFF:

- Age 16-25 Rail Card
  - Age 16-17 Saver
  - Senior Railcard age 60+
  - Veterans Railcard
  - Two Together Railcard
  - Disabled Persons Railcard
  - 26-30 Railcard
  - Family & Friends Railcard
- Find yours at: [railcard.co.uk](http://railcard.co.uk)

PERSONAL TRAVEL PLANNING

To find out how you can improve your journeys, scan the QR code and we will send you your Personal Travel Plan detailing all your journey options. This gives a cost comparison along with time, calories and CO<sub>2</sub> emissions. You can also drop us an email, give us a call or write us a letter to receive your free Personal Travel Plan – please be sure to include: Your name, address, destination travelled from & to along with times of day.

SCAN HERE FOR YOUR PERSONAL TRAVEL PLAN



COMMUNITY TRANSPORT

Chelmsford Community Transport provides a service for those that may find it difficult to travel by regular public transport services, the service can provide travel for medical appointments, day trips and visiting friends and family.

Due to Covid-19 the booking hours may vary, please call **01245 477789** Monday – Friday 9:00am – 2:30pm to make a booking.

WHERE ARE YOU GOING TO VISIT WITH YOUR TRAIN TICKETS?

S	O	U	T	H	M	I	N	S	T	E	R	U
A	U	W	N	V	W	A	O	G	E	O	T	G
L	U	I	F	O	U	S	L	V	N	Q	I	T
T	D	C	S	A	F	J	J	D	S	L	O	D
H	D	K	S	A	F	S	L	F	F	C	H	Y
O	B	F	F	S	D	G	H	R	E	F	G	W
R	W	O	H	T	A	C	V	U	F	J	A	C
N	B	R	F	D	S	F	P	O	U	N	E	X
E	G	D	I	R	B	S	E	L	T	T	A	B
WICKFORD			BATTLESBRIDGE			ALTHORNE			SOUTHMINSTER			



For any travel related questions or  
information please email us on:  
**RiversideGrange@SmarterTravel.uk.com**  
or visit **SmarterTravel.uk.com/RiversideGrange**



**CLAIM  
YOUR  
TRAVEL  
TICKETS  
INSIDE!**



**DAVID WILSON HOMES**

WHERE QUALITY LIVES

847 The Crescent  
Colchester Business Park  
Colchester  
CO4 9YQ

Barratt David Wilson Homes  
7 Springfield Lyons Approach  
Chelmsford, Essex  
CM2 5EY



✉ [RiversideGrange@SmarterTravel.uk.com](mailto:RiversideGrange@SmarterTravel.uk.com)  [SmarterTravel.uk.com/RiversideGrange](https://www.SmarterTravel.uk.com/RiversideGrange)  01603 230240



@SmarterTravelEssex



@RJSmarterTravel